

# Towards bottom-up design of porous electrode microstructures for redox flow batteries

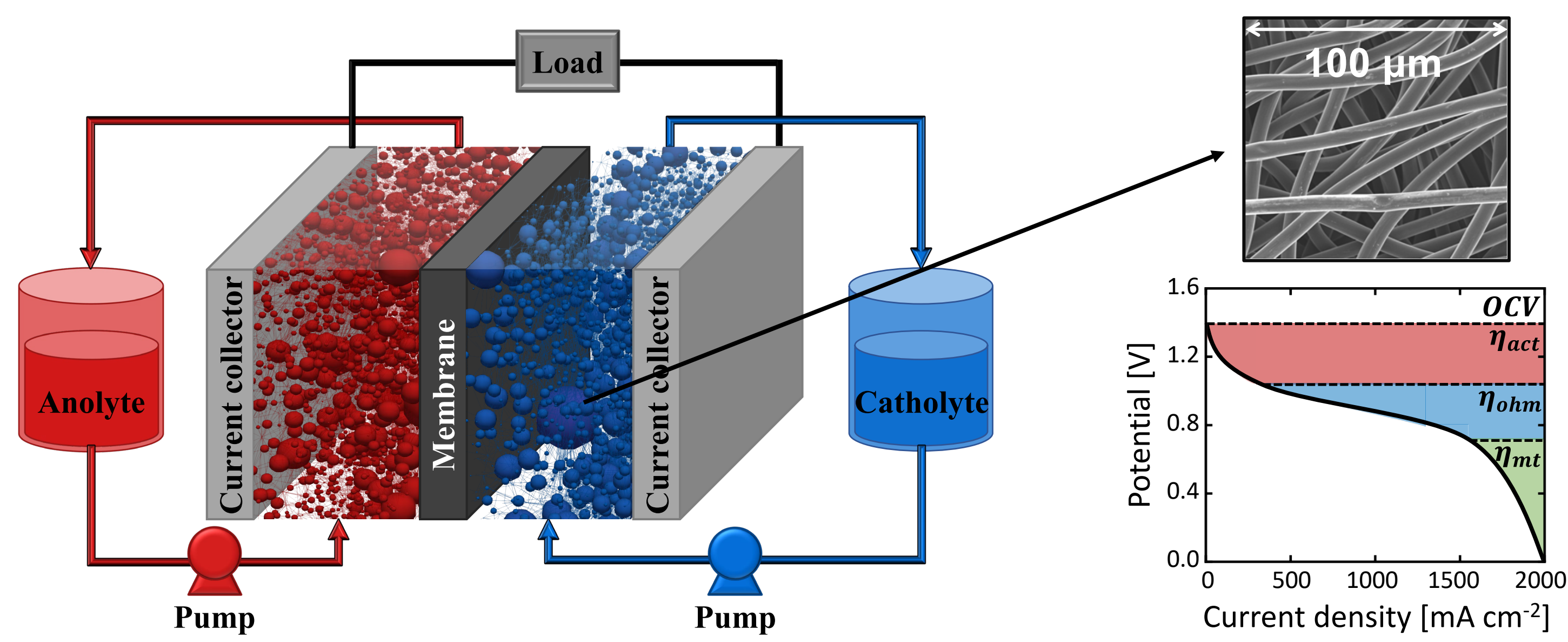
Maxime van der Heijden, Rik van Gorp, Gabor Szendrei, Amin Sadeghi, Jeffrey Gostick, Zandrie Borneman, Antoni Forner-Cuenca

**MMP/P**  
 m.v.d.heijden@tue.nl  
 www.tue.nl/mmp



## Redox Flow Batteries

Redox flow batteries (RFBs) (Figure 1) are a promising technology platform for grid-level storage of intermittent renewable electricity. RFBs are rechargeable electrochemical reactors that enable decoupling the energy (i.e. tank volume) and power (i.e. reactor size), facilitating their large-scale deployment<sup>1</sup>. Porous electrodes need to fulfil several performance-relevant functions related to kinetics and transport which determine the overall efficiency and costs of RFBs.



**Figure 1:** Schematic diagram of a RFB, the porous electrode and the discharge polarization curve showing the three main losses: activation, ohmic, and mass transfer losses.

## Aim of the research

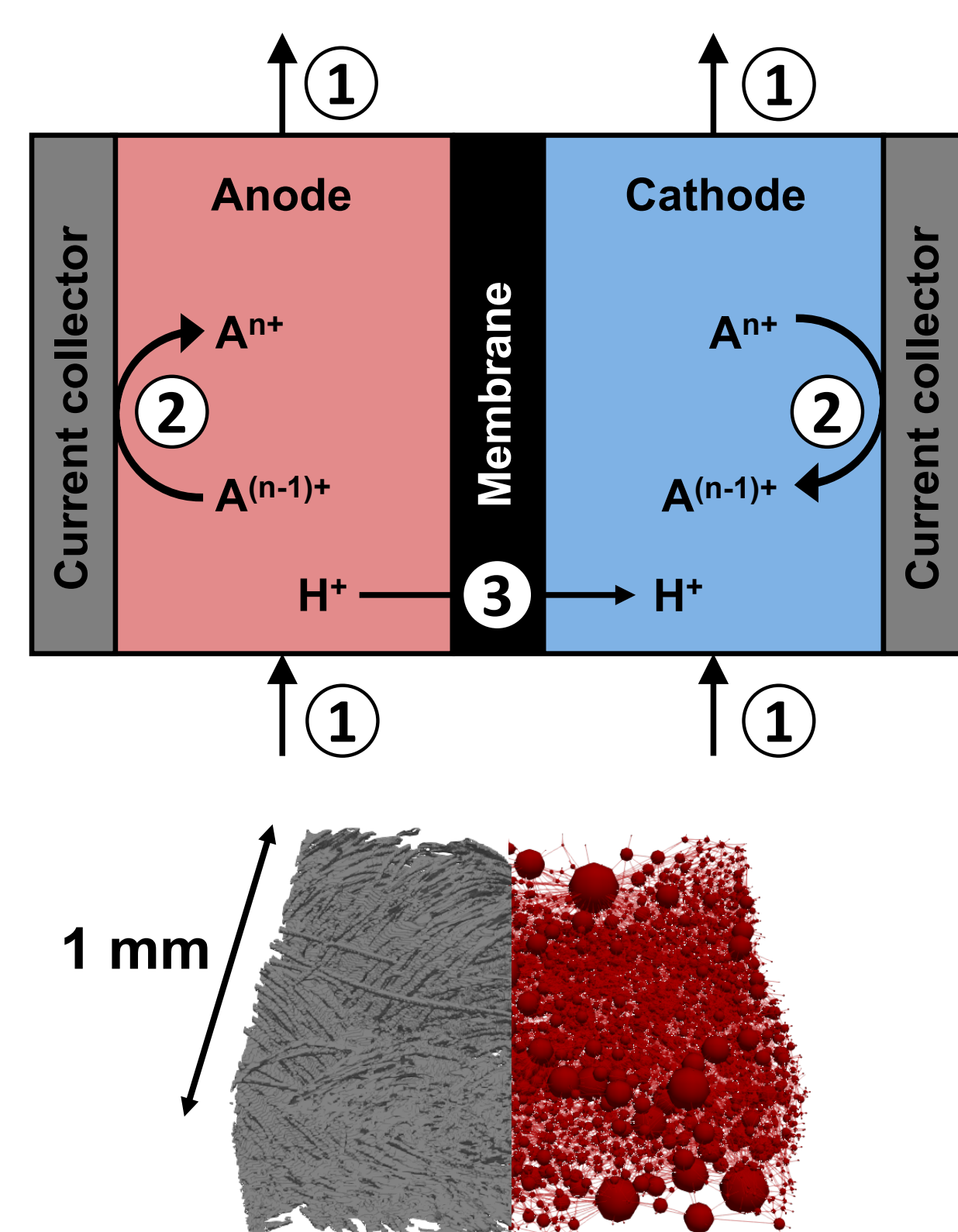
We aim to predict and fabricate optimal electrode geometries for RFBs from the bottom-up, using a combination of experimental characterization, pore network modeling, and genetic algorithms (Figure 2).



**Figure 2:** Illustration of the research pipeline.

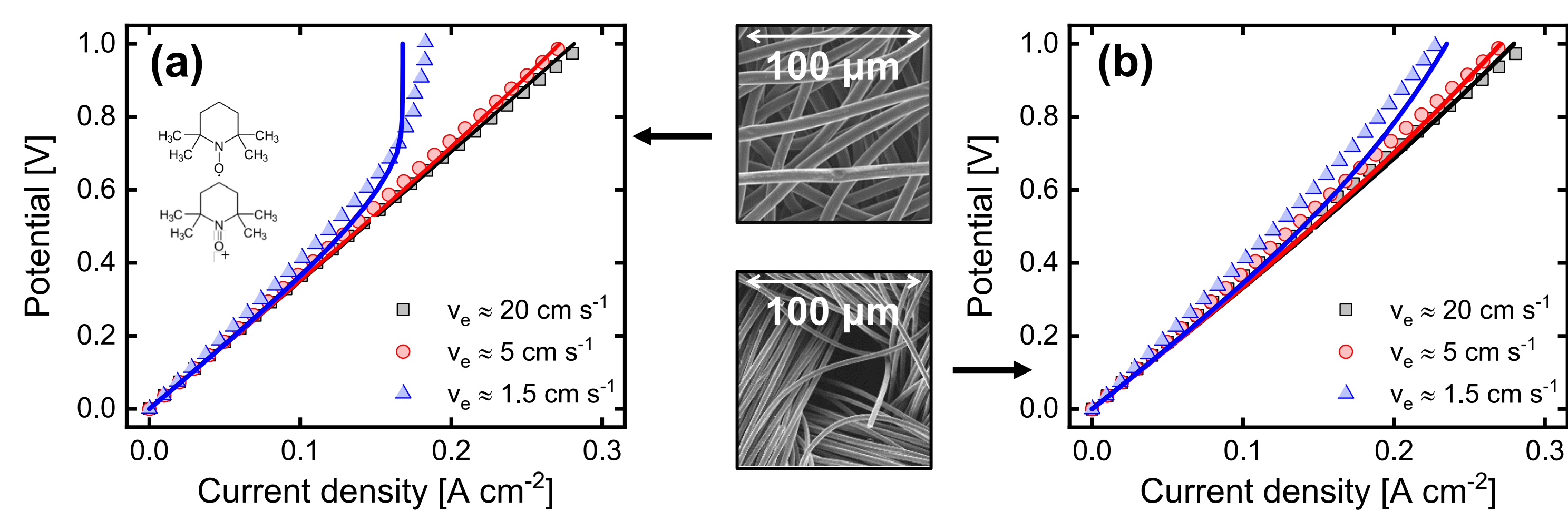
## Pore network model

A three-dimensional electrochemical modelling toolkit integrated in an open access platform (OpenPNM<sup>3</sup>) was developed. The simulation domain is electrolyte-agnostic and computes the electrolyte fluid transport (1), charge transport (2), and species transport (3) (Figure 3) in an iterative fashion at low computational cost. The pore network of two commercial electrodes was used in the pore network model, extracted using X-ray tomography and the SNOW algorithm<sup>2</sup> (Figure 3).



**Figure 3:** Schematic representation of the pore network modelling domain (top) with a dry tomograph and pore network of a carbon cloth (bottom).

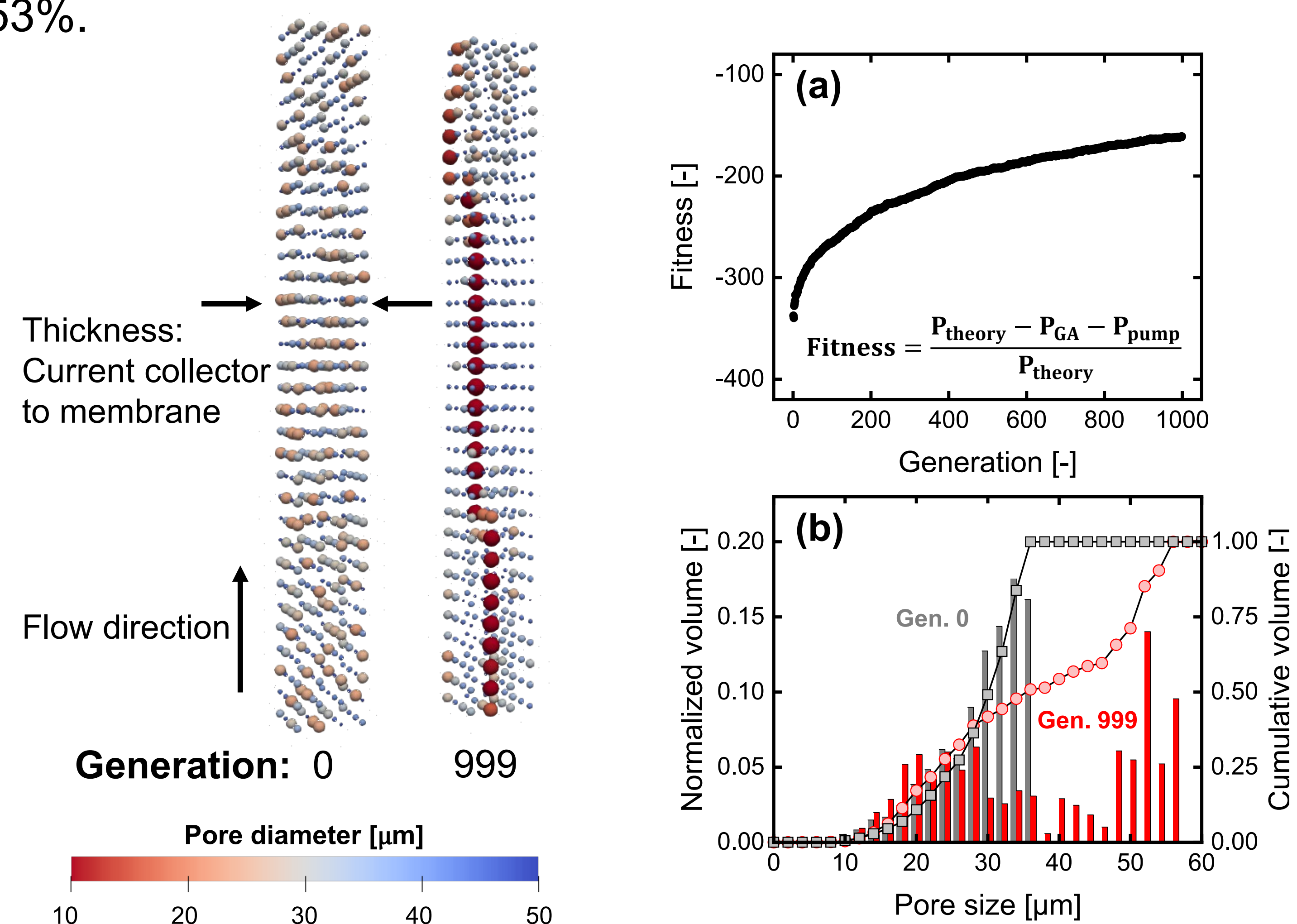
The model was validated for an organic electrolyte using a symmetric cell (Figure 4) for two commercial electrodes without the use of fitting parameters, besides the experimental determination of the exchange current density.



**Figure 4:** Polarization curves of: (a) a carbon paper (Freudenberg H23), and (b) a carbon cloth (ELAT Cloth) electrode. Where the experiments are shown with symbols and the model with a line. A single electrolyte cell with an organic electrolyte (0.1 M TEMPO/TEMPO<sup>+</sup> in 1 M TBAPF<sub>6</sub>/MeCN) was used.

## Genetic Algorithm

A genetic algorithm was created for the bottom-up design of porous electrode microstructures, improving the fitness over generations (Figure 6a). The resulting pore network (Figure 5) features: 1) the generation of fluid highways, decreasing the pumping losses ( $P_{\text{pump}}$ ) by 90%, and 2) hierarchical organization of the pores, resulting in a bimodal pore size distribution (Figure 6b) and an improved electrical performance ( $P_{\text{theory}} - P_{\text{GA}}$ ) of 53%.



**Figure 5:** The first and final pore networks showing the generation of fluid highways along the flow direction.

**Figure 6:** (a) the fitness function evolution over the number of generations, and (b) the pore size distribution for the first and last generation.

## Acknowledgements

This work is part of the Talent Programme Veni with project number 17324, which is partly financed by the Dutch Research Council (NWO).



## References

- [1] S. Shin *et al.*, *RSC Adv.* 3, 9095 (2013)
- [2] J.T. Gostick, *Phys. Rev.* 96, 023307 (2017)
- [3] J.T. Gostick *et al.*, *Comput. Sci. Eng.* 18, 6, 60-74 (2016)